

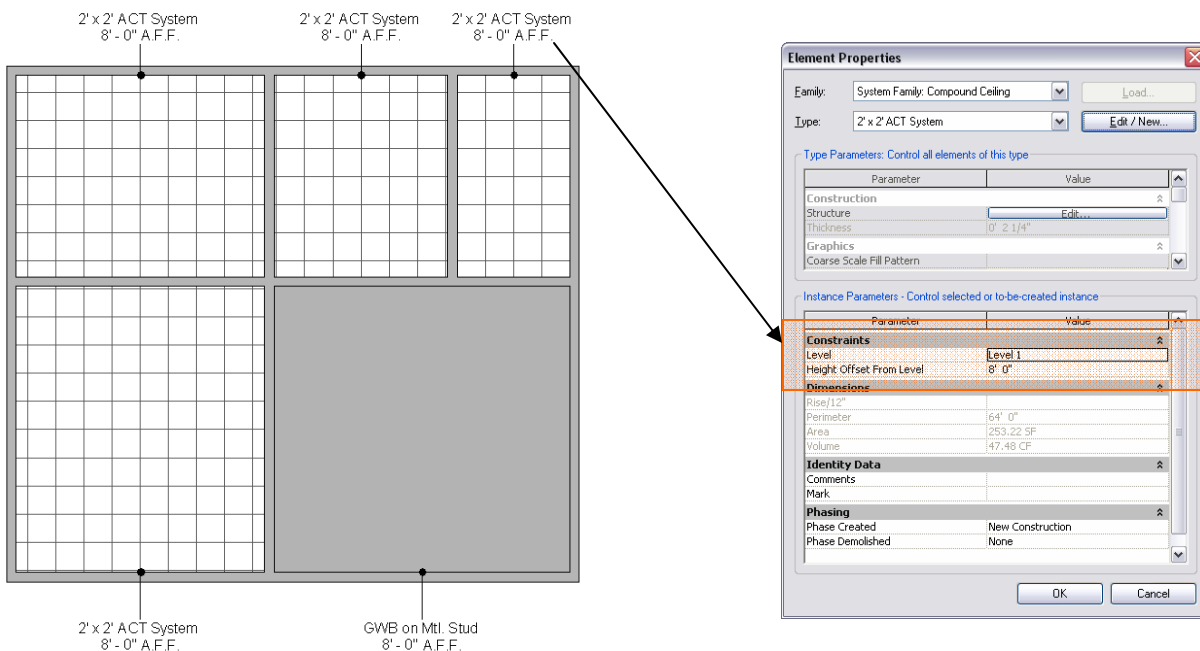
# RevitDC - Washington Area Revit Users Group

## Tech Tip - Using Calculated Values in Schedules

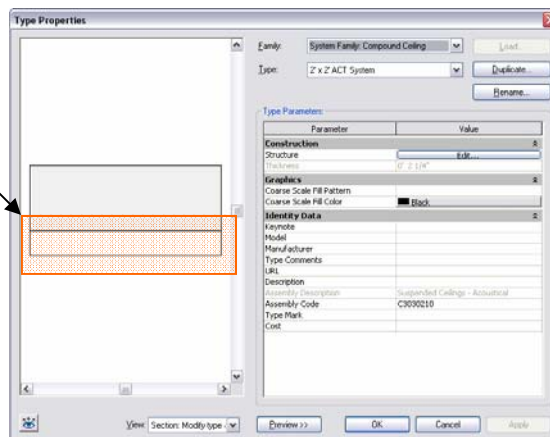
To create a field whose value is calculated from a formula based on other fields in the schedule, use Calculated Values. These allow you to create parameters that depend on other parameters for their values. A simple example would be a width parameter set to equal twice the height of an object. In practice, formulas can be used in many ways, both simple and sophisticated.

### Unique Ceiling Properties

- Ceilings have very limited properties to work with.
- Ceilings use a hatch pattern to mimic the actual ceiling tiles.

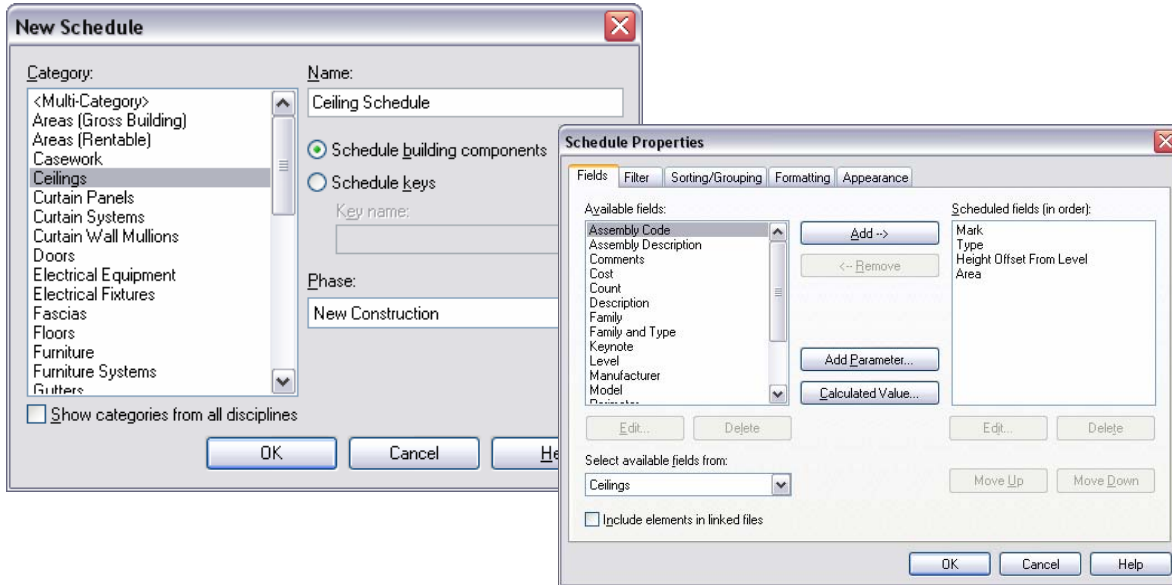


A hatch pattern is used as a surface pattern for this material component.



## Create the Ceiling Schedule

- Select Ceilings from the New Schedule Dialog Box
- Select Mark, Type, Height Offset From Level, and Area from the Available Fields list
- Select OK to view the schedule



Mark	Type	Height Offset From Level	Area
101	2' x 2' ACT System	8' - 0"	253 SF
102	2' x 2' ACT System	8' - 0"	177 SF
103	2' x 2' ACT System	8' - 0"	115 SF
104	2' x 2' ACT System	8' - 0"	359 SF
105	GWB on Mtl. Stud	8' - 0"	427 SF

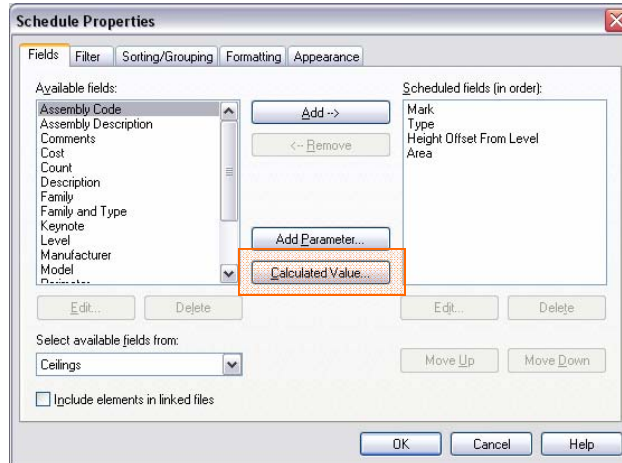
## Clean Up the Ceiling Schedule

- Edit the Properties of the Ceiling Schedule.
- Add the Assembly Code field because it is a unique field that allows us to differentiate 2x2 Ceiling Ceilings from Gypsum Wall Board Ceilings.
- 2x2 ACT Ceilings have an Assembly Code of C3030210.
- Filter for that value.
- Hide the Assembly Code Value

Mark	Type	Height Offset From Level	Area	Assembly Code
101	2' x 2' ACT System	8' - 0"	253 SF	C3030210
102	2' x 2' ACT System	8' - 0"	177 SF	C3030210
103	2' x 2' ACT System	8' - 0"	115 SF	C3030210
104	2' x 2' ACT System	8' - 0"	359 SF	C3030210

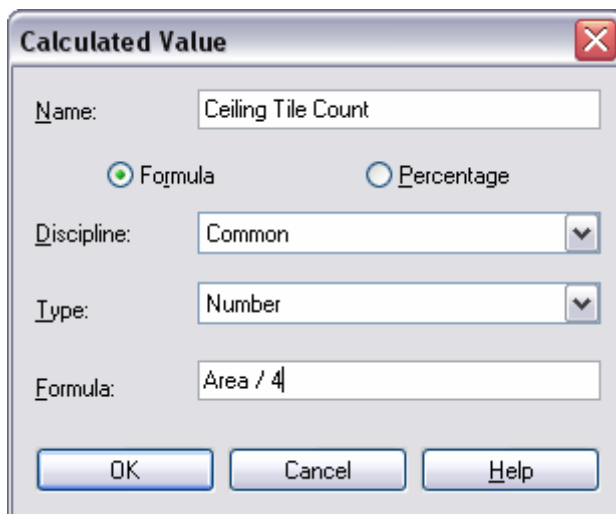
## Create Calculated Values

- Return to the Ceiling Schedule Properties
- Select the Fields Tab
- Select the Calculated Value... Button



## Create a Formula

- Give a name to the Value. Be aware that this is case sensitive.
- Select Formula or Percentage.
- Select the proper Discipline.
- Select the proper data Type.
- Enter a formula in the space provided. Again, this is a case sensitive.
- Format as necessary.

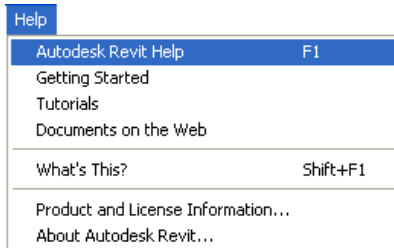


Ceiling Schedule				
Mark	Type	Height Offset From Level	Area	Ceiling Tile Count
101	2' x 2' ACT System	8' - 0"	253 SF	63
102	2' x 2' ACT System	8' - 0"	177 SF	44
103	2' x 2' ACT System	8' - 0"	115 SF	29
104	2' x 2' ACT System	8' - 0"	359 SF	90

# What's Next?

Revit Building Tutorials:

Accessed through the Help menu...



CADD Microsystems, Inc., Training Classes:

CMI is an Autodesk Premier Authorized Training Center with Autodesk Certified Instructors for...

- Revit Building - Level I + Level II
- Revit Systems
- Revit Structure

World Wide Web:

**www.caddmicro.com** - visit our web site for more detailed and up-to-date information about classes and seminars.

**www.autodesk.com** - an extensive online database of product information, tips, and downloads.

**www.augi.com** - an extensive online database of product information, tips, and downloads.

**www.revitcity.com** - an extensive online community with tips and downloads.